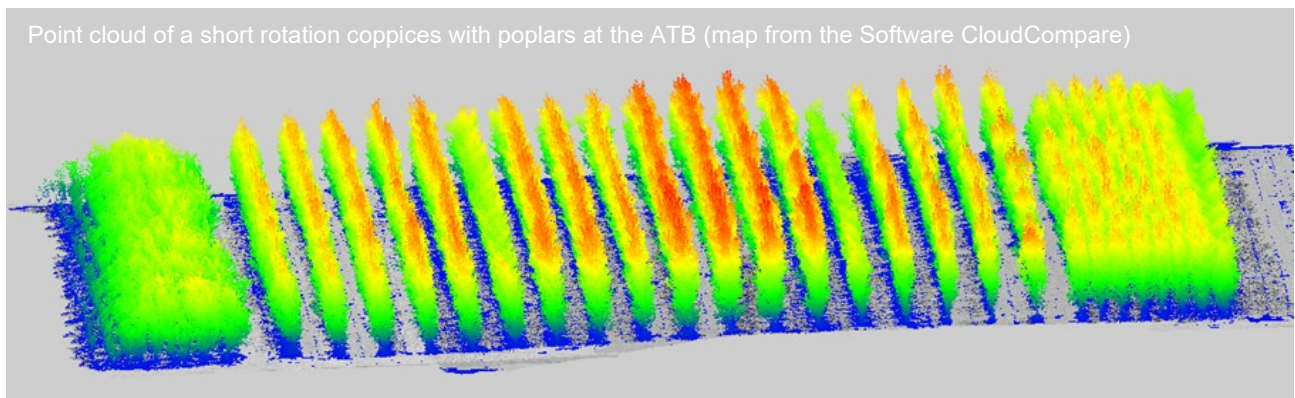


*** English Version *****

The *Joint Lab Künstliche Intelligenz & Data Science* is a cooperation between the Leibniz-Institut für Agrartechnik und Bioökonomie e. V. (ATB) and the Universität Osnabrück with the aim to find a connection between agriculture and informatics. As part of this cooperation, we are conducting a "leaf extraction experiment" and are looking for a

Student assistant (m/w/d) from the natural sciences or computer science

The production of renewable energy is an essential part of politics and the economy. A possible approach is the use of fast-growing trees (e.g., poplars) in short rotation coppices. First, the trees bind the carbon so that it can be used flexibly to generate energy in a further step. Leaves from trees are a byproduct that can increase carbon levels in the soil. Field data is necessary to prove this thesis. In addition, we combine field data with drone data based on deep learning approaches for a comprehensive analysis.



We are looking for support in the following areas:

- collection in the field (leaf mass estimates, soil samples, etc.)
- Soil sample analysis in the laboratory
- Digital processing of the measurement data
- Depending on interest, further work within the framework of the project

We would like:

- Interest in nature science
- Willingness to work in the field
- Independent and structured way of working

We offer you:

- You have the opportunity to follow a scientific project from the beginning and to be able to participate accordingly
- You will receive a good introduction to varied activities
- Depending on the area of responsibility, you will spend time outdoors, in the laboratory or at home
- Opportunity to write a thesis
- The research areas are located directly at the ATB, so you will gain insights into a non-university research company

The position is a part-time job (30 - 40 hours per month) and is remunerated at €13.25/hour or €13.83/hour for students with a bachelor's degree. A Christmas bonus is also paid. Enrolment at a German university is a prerequisite. You can find more information online at www.atb-potsdam.de and https://www.jl-kids.uni-osnabrueck.de/joint_lab_kids.html. Are you interested? Then please send a short application (a few bullet points on your CV are sufficient) to **Ms. Clara Lößl** (email: clara.loessl@uos.de) by July 15, 2024. Applications received after the application deadline cannot be considered. Equal opportunities are part of our personnel policy. Severely disabled people will be given priority if they are equally qualified.